



2022

ANNUAL REPORT
FACTS AND STATS



Your Diagnosis and Treatment: Precise and Accurate

Throughout 2022, the CAP stood together with its members as leaders in the health care community, working to improve laboratory quality and conditions for pathologists and care for their patients. In the 2022 CAP Annual Report, you will learn the biggest highlights and actions from the year. This summary provides a quick recap; visit annualreport.cap.org for the full story.

LEADING LABORATORY QUALITY

In 2022, the CAP launched 15 new PT programs across eight disciplines to address developments in cancer care and other diseases and provide the most up-to-date testing methods. The CAP also founded the first new council in 18 years, the Council on Informatics and Pathology Innovation, to consolidate our efforts and recommend strategic direction on current and emerging medical information science. Learn about our evidence-based guidelines, global outreach, and more in the full annual report.

LIVING OUR QUALITY MISSION

23,575
laboratories
using the CAP's PT

1,889
pathologists
participating in
on-site inspections

8,048
CAP-accredited
laboratories



INFLUENCING PUBLIC POLICY

Throughout 2022, the CAP and its members advocated to protect the value of pathology services while providing the best care for their patients. At the CAP's annual Hill Day, hundreds of CAP members discussed how Congress can mitigate Medicare cuts, alleviate medical workforce shortages, and ensure funding for future pandemic preparedness. Advocating on

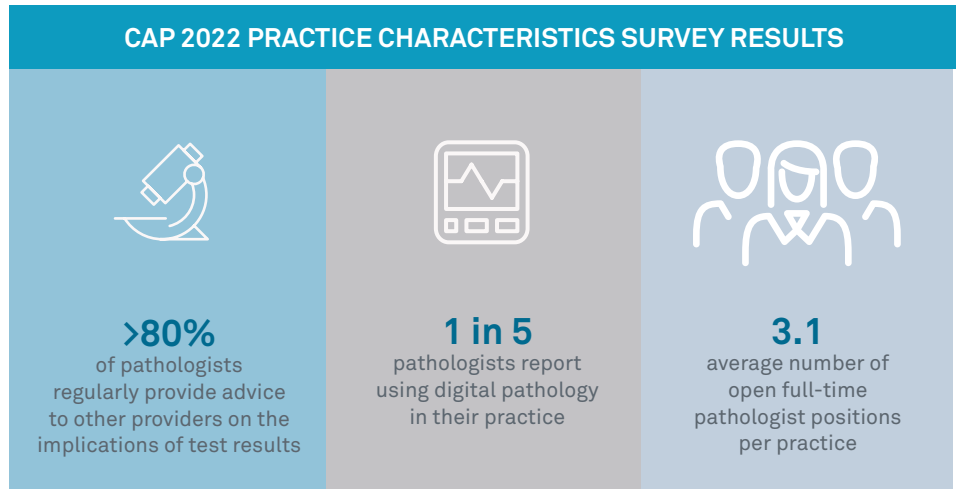
PROTECTING PATIENTS AND PATHOLOGISTS

241
pathologists spoke
with the offices of their
members of Congress

>300
virtual Hill Day meetings
between pathologists and
congressional offices



behalf of health care professionals and patients, the CAP established policy and supported legislation and regulatory actions to address social determinants of health and reduce health disparities in the United States. Read more about the Pathologists Quality Registry, results from the CAP practice survey, and work with state pathology societies in our full digital report.



INVESTING IN OUR MEMBERS

The CAP kept members connected while also building its membership to become a more inclusive and representative organization. New member classes for medical students and international pathology residents were created in 2022 to support a more all-encompassing and global member community. The CAP’s commitment to diversity was also a priority in 2022 with the first active year of the Diversity, Equity, Inclusion (DEI) Committee, whose charge is to support the visibility and participation of underrepresented pathologists and pathologists-in-training while also engaging all CAP members to be agents of change in their laboratories. The CAP also increased outreach to medical students through new initiatives to help secure the



future of the specialty with new pathologist leaders. The CAP22 annual meeting, Pathology in the Park, the MyCAP app, and other virtual and in-person opportunities gave members the best pathology education available while allowing them to seamlessly connect with other pathologists worldwide.

Learn more about new CAP member resources, the CAP Foundation, and employee updates in the full report.

Visit annualreport.cap.org or scan the code below to read the full 2022 CAP Annual Report.



FINANCIAL UPDATE

The CAP had another strong year, balancing headwinds with strong performance to achieve our financial objectives and support members, customers, and patients. Revenue was in line with the Board-approved target as better than expected laboratory accreditation and other revenue offset softness in periodicals advertising. Expenses were slightly below budget as travel costs returned to near pre-pandemic levels and other expenses increased largely in line with the 2022 Board-approved budget. Overall, the CAP saw better than breakeven results from operations (as measured by earnings before interest, depreciation, and amortization, minus capital expenditures of \$0.7 million). This exceeds our long-term target and positions us well for continued success.