

Quality ID #249: Barrett's Esophagus

2026 COLLECTION TYPE:

MERIT-BASED INCENTIVE PAYMENT SYSTEM (MIPS) MEDICARE PART B CLAIMS

MEASURE TYPE:

Process

DESCRIPTION:

Percentage of esophageal biopsy reports that document the presence of Barrett's mucosa that also include a statement about dysplasia.

INSTRUCTIONS:

Reporting Frequency:

This measure is to be submitted for each procedure that is denominator eligible as defined in the denominator criteria.

Intent and Clinician Applicability:

The intent of this measure is to assess esophageal biopsy reports indicating Barrett's Esophagus for a statement regarding presence or absence of dysplasia and grading. This measure may be submitted by Merit-based Incentive Payment System (MIPS) eligible clinicians who perform the quality actions as defined by the numerator based on the services provided and the measure-specific denominator coding.

Measure Strata and Performance Rates:

This measure contains one strata defined by a single submission criteria.

This measure produces a single performance rate.

Implementation Considerations:

For purposes of MIPS implementation, this procedure measure is submitted each time a procedure is performed during the performance period. Only one quality data code (QDC) per date of service for a patient is required. If multiple measure specific QDCs or QDC combinations are listed on the claim, performance rates shall be calculated using the most advantageous QDC or QDC combination.

Telehealth:

NOT TELEHEALTH ELIGIBLE: This measure is not appropriate for nor applicable to the telehealth setting. This measure is procedure based and therefore doesn't allow for the denominator criteria to be conducted via telehealth. It would be appropriate to remove these patients from the denominator eligible patient population. Telehealth eligibility is at the measure level for inclusion within the denominator eligible patient population and based on the measure specification definitions which are independent of changes to coding and/or billing practices.

Measure Submission:

Measure data may be submitted by individual MIPS eligible clinicians using Medicare Part B claims. The listed denominator criteria are used to identify the intended patient population. The numerator quality data codes included in this specification are used to submit the quality actions allowed by the measure on the claim form(s). All measure-specific coding should be submitted on the claim(s) representing the denominator eligible encounter and denominator exclusion(s) (as applicable) or selected numerator option. Denominator exclusions describe a circumstance where the patient should be removed from the denominator. Within Medicare Part B claims submissions, denominator exclusions identify circumstances where the patient should be removed from the performance rate calculation prior to determining which numerator outcome is appropriate. QDCs are available to describe the denominator exclusion within the Measure Specification and should be submitted on the claim.

DENOMINATOR:

All surgical pathology esophageal biopsy reports for Barrett's Esophagus.

Denominator Criteria (Eligible Cases):

Diagnosis for Barrett's Esophagus (ICD-10-CM): K22.70, K22.710, K22.711, K22.719

AND

Patient procedure during the performance period (CPT): 88305

NUMERATOR:

Esophageal biopsy report documents the presence of Barrett's mucosa and includes a statement about dysplasia.

NUMERATOR NOTE:

Submit quality data codes once per patient for each date-of-service.

Numerator Quality Data Coding Options:

Esophageal Biopsy Reports with the Histological Finding of Barrett's Mucosa that Contains a Statement about Dysplasia (present, absent, or indefinite and if present, contains appropriate grading)

Performance Met: 3126F: Esophageal biopsy reports with the histological finding of Barrett's mucosa that contains a statement about dysplasia (present, absent, or indefinite and if present, contains appropriate grading)

OR

Esophageal Biopsy Reports with the Histological Finding of Barrett's Mucosa that Contains a Statement about Dysplasia (present, absent, or indefinite) not Performed for Medical Reasons

Append a modifier (1P) to Category II code 3126F to submit documented circumstances when the action described in the numerator is not performed and there is a medical reason.

Denominator Exception: 3126F with 1P: Documentation of medical reason(s) for not submitting the histological finding of Barrett's mucosa (e.g., malignant neoplasm or absence of intestinal metaplasia)

OR

Specimen is not of Esophageal Origin

Denominator Exception: G8797: Specimen site other than anatomic location of esophagus

OR

Esophageal Biopsy Reports with the Histological Finding of Barrett's Mucosa that does not Contain a Statement about Dysplasia (present, absent, or indefinite), Reason not Otherwise Specified

Append a submit modifier (8P) to CPT Category II code 3126F to submit circumstances when the action described in the numerator is not performed and the reason is not otherwise specified

Performance Not Met: 3126F with 8P: Pathology report with the histological finding of Barrett's mucosa that does not contain a statement about dysplasia (present, absent, or indefinite, and if present, contains appropriate grading), reason not otherwise specified

RATIONALE:

Endoscopy is the technique of choice used to identify suspected Barrett's esophagus and to diagnose complications of GERD. Biopsy must be added to confirm the presence of Barrett's epithelium and to evaluate for dysplasia (ACG, 2022; AGA, 2011).

There is a rapidly rising incidence of adenocarcinoma of the esophagus in the United States. A diagnosis of Barrett's esophagus increases a patient's risk for esophageal adenocarcinoma by 30 to 125 times that of people without Barrett's esophagus (although this risk is still small 0.4% to 0.5% per year) (Conteduca et al 2012, Intl J Onc). Esophageal adenocarcinoma is often not curable, partly because the disease is frequently discovered at a late stage and because treatments are not effective. A diagnosis of Barrett's esophagus could allow for appropriate screening of at risk patients as recommended by the American College of Gastroenterology.

Standard endoscopy with biopsy currently is the most reliable means of establishing a diagnosis of Barrett's esophagus. The definitive diagnosis of Barrett's esophagus requires a pathologist's review of an esophageal biopsy. Dysplasia is the first step in the neoplastic process, and information about dysplasia is crucial for clinical decision-making directing therapy. The presence and grade of dysplasia cannot be determined by routine endoscopy, and pathologist's review of a biopsy is essential for recognition of dysplasia, especially given that there are no recommended biomarkers for Barrett's esophagus. Endoscopic surveillance detects curable neoplasia in patients with Barrett's esophagus (AGA 2025).

CLINICAL RECOMMENDATION STATEMENTS:

The diagnosis of Barrett's esophagus requires systematic biopsy of the abnormal-appearing esophageal mucosa to document intestinal metaplasia and to detect dysplasia (ACG, 2022).

REFERENCES:

- ACG. (2022). Katz, P. O., Dunbar, K. B., Schnoll-Sussman, F. H., Greer, K. B., Yadlapati, R., & Spechler, S. J. (2022). ACG Clinical Guideline for the Diagnosis and Management of Gastroesophageal Reflux Disease. *The American journal of gastroenterology*, 117(1), 27–56. <https://doi.org/10.14309/ajg.0000000000001538>
- AGA. (2011). American Gastroenterological Association, Spechler, S. J., Sharma, P., Souza, R. F., Inadomi, J. M., & Shaheen, N. J. (2011). American Gastroenterological Association medical position statement on the management of Barrett's esophagus. *Gastroenterology*, 140(3), 1084–1091. <https://doi.org/10.1053/j.gastro.2011.01.030>
- AGA. (2025). Wani, S., Zhou, M. J., Sawas, T., Rubenstein, J. H., Eluri, S., Leiman, D. A., Sultan, S., Singh, S., Inadomi, J., Thrift, A. P., Katzka, D. A., & Davitkov, P. (2025). AGA Clinical Practice Guideline on Surveillance of Barrett's Esophagus. *Gastroenterology*, 169(6), 1184–1231. <https://doi.org/10.1053/j.gastro.2025.09.012>

COPYRIGHT:

The measure is not a clinical guideline, does not establish a standard of medical care, and has not been tested for all potential applications.

The measure, while copyrighted, can be reproduced and distributed, without modification, for noncommercial purposes, e.g., use by health care providers in connection with their practices. Commercial use is defined as the sale, license, or distribution of the measure for commercial gain, or incorporation of the measure into a product or service that is sold, licensed or distributed for commercial gain.

THE MEASURES ARE PROVIDED "AS IS" WITHOUT WARRANTY OF ANY KIND.

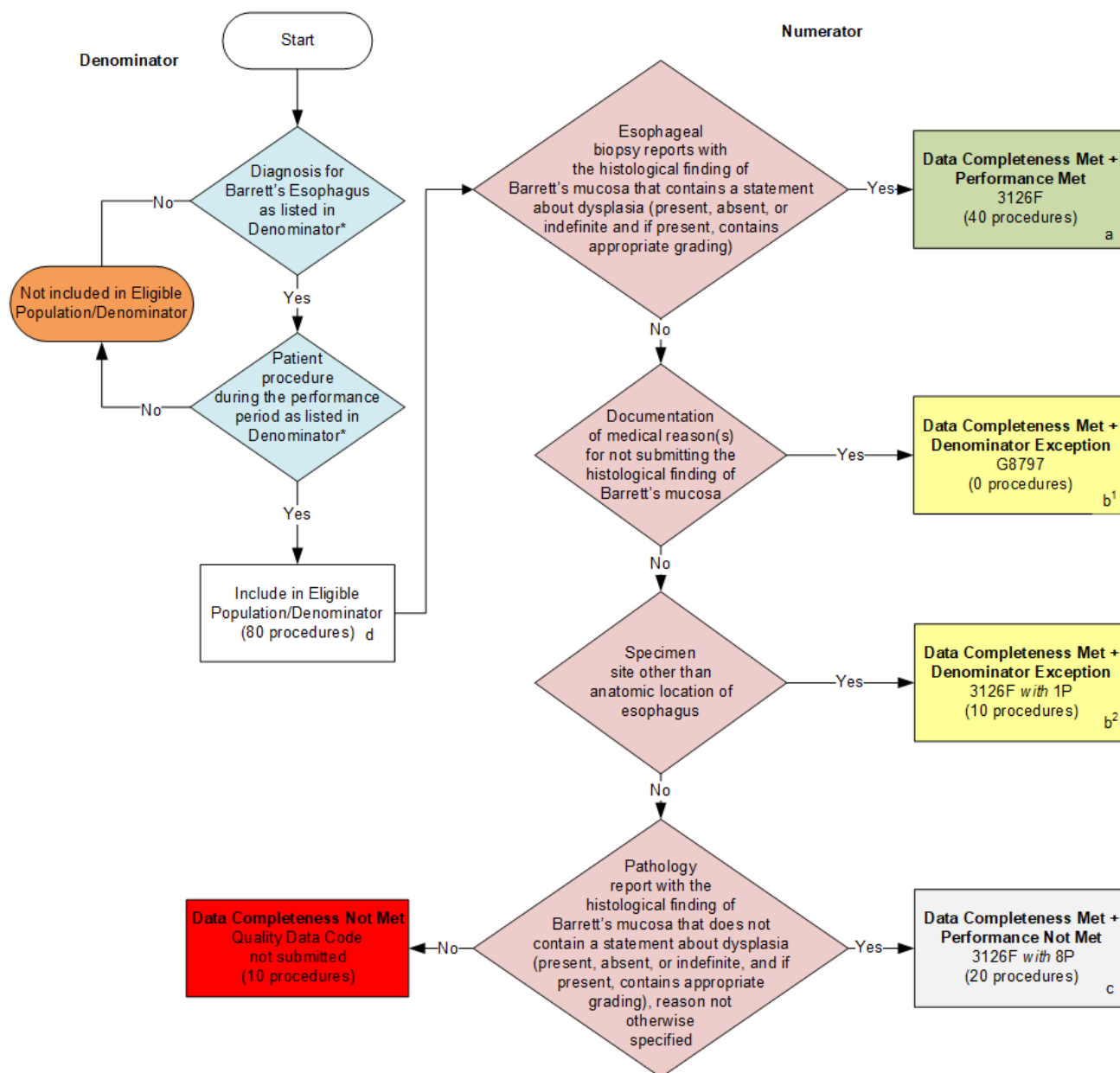
© 2025 College of American Pathologists. All Rights Reserved

Limited proprietary coding is contained in the Measure specifications for convenience. Users of the proprietary code sets should obtain all necessary licenses from the owners of these code sets. The College of American Pathologists disclaims all liability for use or accuracy of any Current Procedural Terminology (CPT®) or other coding contained in the specifications.

CPT® contained in the Measures specifications is copyright 2004-2024 American Medical Association. ICD-10 is copyright 2024 World Health Organization. All Rights Reserved.

2026 Medicare Part B Claims Flow for Quality ID #249: Barrett's Esophagus

Disclaimer: Refer to the measure specification for specific coding and instructions to submit this measure.



SAMPLE CALCULATIONS

Data Completeness=

$$\frac{\text{Performance Met (a=40 procedures)} + \text{Denominator Exception (b}^1\text{+b}^2\text{=10 procedures)} + \text{Performance Not Met (c=20 procedures)}}{\text{Eligible Population / Denominator (d=80 procedures)}} = \frac{70 \text{ procedures}}{80 \text{ procedures}} = 87.50\%$$

Performance Rate=

$$\frac{\text{Performance Met (a=40 procedures)}}{\text{Data Completeness Numerator (70 procedures) – Denominator Exception (b}^1\text{+b}^2\text{=10 procedures) = 60 procedures}} = \frac{40 \text{ procedures}}{60 \text{ procedures}} = 66.67\%$$

*See the posted measure specification for specific coding and instructions to submit this measure.

NOTE: Submission Frequency: Procedure

CPT only copyright 2025 American Medical Association. All rights reserved.
The measure diagrams were developed by CMS as a supplemental resource to be used in conjunction with the measure specifications. They should not be used alone or as a substitution for the measure specification.

v10

2026 Medicare Part B Claims Flow Narrative for Quality ID #249: Barrett's Esophagus

Disclaimer: Refer to the measure specification for specific coding and instructions to submit this measure.

1. Start with Denominator
2. Check *Diagnosis for Barrett's Esophagus as listed in the Denominator**:
 - a. If *Diagnosis for Barrett's Esophagus as listed in the Denominator** equals No, do not include in *Eligible Population/Denominator*. Stop processing.
 - b. If *Diagnosis for Barrett's Esophagus as listed in the Denominator** equals Yes, proceed to check *Patient procedure during the performance period as listed in Denominator**.
3. Check *Patient procedure during the performance period as listed in Denominator**:
 - a. If *Patient procedure during the performance period as listed in Denominator** equals No, do not include in *Eligible Population/Denominator*. Stop processing.
 - b. If *Patient procedure during the performance period as listed in Denominator** equals Yes, include in *Eligible Population/Denominator*.
4. Denominator Population:
 - Denominator Population is all Eligible Procedures in the Denominator. Denominator is represented as Denominator in the Sample Calculation listed at the end of this document. Letter d equals 80 procedures in the Sample Calculation.
5. Start Numerator
6. Check *Esophageal biopsy reports with the histological finding of Barrett's mucosa that contains a statement about dysplasia (present, absent, or indefinite and if present, contains appropriate grading)*:
 - a. If *Esophageal biopsy reports with the histological finding of Barrett's mucosa that contains a statement about dysplasia (present, absent, or indefinite and if present, contains appropriate grading)* equals Yes, include in *Data Completeness Met and Performance Met*.
 - *Data Completeness Met and Performance Met* letter is represented in the Data Completeness and Performance Rate in the Sample Calculation listed at the end of this document. Letter a equals 40 procedures in Sample Calculation.
 - b. If *Esophageal biopsy reports with the histological finding of Barrett's mucosa that contains a statement about dysplasia (present, absent, or indefinite and if present, contains appropriate grading)* equals No, proceed to check *Documentation of medical reason(s) for not submitting the histological finding of Barrett's mucosa*.
7. Check *Documentation of medical reason(s) for not submitting the histological finding of Barrett's mucosa*:
 - a. If *Documentation of medical reason(s) for not submitting the histological finding of Barrett's mucosa* equals Yes, include in *Data Completeness Met and Denominator Exception*.
 - *Data Completeness Met and Denominator Exception* letter is represented in the Data Completeness and Performance Rate in the Sample Calculation listed at the end of this document. Letter b¹ equals 0 procedures in the Sample Calculation.

- b. If *Documentation of medical reason(s) for not submitting the histological finding of Barrett's mucosa* equals No, proceed to check *Specimen site other than location of esophagus*.
8. Check *Specimen site other than anatomic location of esophagus*:
 - a. If *Specimen site other than anatomic location of esophagus* equals Yes, include in *Data Completeness Met and Denominator Exception*.
 - *Data Completeness Met and Denominator Exception* letter is represented in the Data Completeness and Performance Rate in the Sample Calculation listed at the end of this document. Letter b² equals 10 procedures in the Sample Calculation.
 - b. If *Specimen site other than anatomic location of esophagus* equals No, proceed to check *Pathology report with the histological finding of Barrett's mucosa that does not contain a statement about dysplasia (present, absent, or indefinite, and if present, contains appropriate grading), reason not otherwise specified*.
9. Check *Pathology report with the histological finding of Barrett's mucosa that does not contain a statement about dysplasia (present, absent, or indefinite, and if present, contains appropriate grading), reason not otherwise specified*:
 - a. If *Pathology report with the histological finding of Barrett's mucosa that does not contain a statement about dysplasia (present, absent, or indefinite, and if present, contains appropriate grading), reason not otherwise specified* equals Yes, include in the *Data Completeness Met and Performance Not Met*.
 - *Data Completeness Met and Performance Not Met* letter is represented in the Data Completeness in the Sample Calculation listed at the end of this document. Letter c equals 20 procedures in the Sample Calculation.
 - b. If *Pathology report with the histological finding of Barrett's mucosa that does not contain a statement about dysplasia (present, absent, or indefinite, and if present, contains appropriate grading), reason not otherwise specified* equals No, proceed to check *Data Completeness Not Met*.
10. Check *Data Completeness Not Met*:
 - If *Data Completeness Not Met*, the Quality Data Code was not submitted. 10 procedures have been subtracted from Data Completeness Numerator in the Sample Calculation.

Sample Calculations

Data Completeness equals Performance Met (a equals 40 procedures) plus Denominator Exception (b¹ equals 0 procedures + b² equals 10 procedures) plus Performance Not Met (c equals 20 procedures) divided by Eligible Population/Denominator (d equals 80 procedures). All equals 70 procedures divided by 80 procedures. All equals 87.50 percent.

Performance Rate equals Performance Met (a equals 40 procedures) divided by Data Completeness Numerator (70 procedures) minus Denominator Exception (b¹ plus b² equals 10 procedures). All equals 40 procedures divided by 60 procedures. All equals 66.67 percent.

See the posted measure specification for specific coding and instructions to submit this measure.

NOTE: Submission Frequency: Procedure

The measure diagrams were developed by CMS as a supplemental resource to be used in conjunction with the measure specifications. They should not be used alone or as a substitution for the measure specification.