

Quality ID #250: Radical Prostatectomy Pathology Reporting

2026 COLLECTION TYPE:

MERIT-BASED INCENTIVE PAYMENT SYSTEM (MIPS) MEDICARE PART B CLAIMS

MEASURE TYPE:

Process

DESCRIPTION:

Percentage of radical prostatectomy pathology reports that include the pT category, the pN category, the Gleason score and a statement about margin status.

INSTRUCTIONS:

Reporting Frequency:

This measure is to be submitted for each procedure that is denominator eligible as defined in the denominator criteria.

Intent and Clinician Applicability:

The intent of this measure is to assess Radical Prostatectomy reports for inclusion of the pT category, the pN category, Gleason score and a statement about margin status. This measure may be submitted by Merit-based Incentive Payment System (MIPS) eligible clinicians who perform the quality actions as defined by the numerator based on the services provided and the measure-specific denominator coding.

Measure Strata and Performance Rates:

This measure contains one strata defined by a single submission criteria.

This measure produces a single performance rate.

Implementation Considerations:

For purposes of MIPS implementation, this procedure measure is submitted each time a procedure is performed during the performance period. Only one quality data code (QDC) per date of service for a patient is required. If multiple measure specific QDCs or QDC combinations are listed on the claim, performance rates shall be calculated using the most advantageous QDC or QDC combination.

Telehealth:

NOT TELEHEALTH ELIGIBLE: This measure is not appropriate for nor applicable to the telehealth setting. This measure is procedure based and therefore doesn't allow for the denominator criteria to be conducted via telehealth. It would be appropriate to remove these patients from the denominator eligible patient population. Telehealth eligibility is at the measure level for inclusion within the denominator eligible patient population and based on the measure specification definitions which are independent of changes to coding and/or billing practices.

Measure Submission:

Measure data may be submitted by individual MIPS eligible clinicians using Medicare Part B claims. The listed denominator criteria are used to identify the intended patient population. The numerator quality data codes included in this specification are used to submit the quality actions allowed by the measure on the claim form(s). All measure-specific coding should be submitted on the claim(s) representing the denominator eligible encounter and denominator exclusion(s) (as applicable) or selected numerator option. Denominator exclusions describe a circumstance where the patient should be removed from the denominator. Within Medicare Part B claims submissions, denominator exclusions identify circumstances where the patient should be removed from the performance rate calculation prior to determining which numerator outcome is appropriate. QDCs are available to describe the denominator exclusion within the Measure Specification and should be submitted on the claim.

DENOMINATOR:

All radical prostatectomy surgical pathology examinations performed during the measurement period for primary prostate cancer.

Denominator Criteria (Eligible Cases):

Diagnosis for malignant neoplasm of prostate (ICD-10-CM): C61

AND

Patient procedure during the performance period (CPT): 88309

AND NOT

DENOMINATOR EXCLUSION:

If Patient is not Eligible for this Measure because the Specimen is not Primary Prostate Tissue from a Radical Resection Report

Specimen site other than anatomic location of prostate: G8798

NUMERATOR:

Radical Prostatectomy reports that include the pT category, the pN category, Gleason score and a statement about margin status.

Numerator Quality Data Coding Options:

Radical Prostatectomy Report includes pT category, pN category, Gleason Score and Statement about Margin Status

Performance Met: 3267F:

Pathology report includes pT category, pN category, Gleason score and statement about margin status

OR

pT category, pN category, Gleason Score and Statement about Margin Status not Documented for Medical Reasons

Append a modifier (1P) to Category II code 3267F to submit documented circumstances when the action in the described in the numerator is not performed and there is a medical reason.

Denominator Exception: 3267F with 1P:

Documentation of medical reason(s) for not including pT category, pN category, Gleason score and statement about margin status in the pathology report (e.g., specimen originated from other malignant neoplasms, transurethral resections of the prostate (TURP), or secondary site prostatic carcinomas)

OR

pT category, pN category, Gleason Score and Statement about Margin Status not Documented, Reason not Otherwise Specified

Append a submitting modifier (8P) to CPT Category II code 3267F to submit circumstances when the action described in the numerator is not performed and the reason is not otherwise specified.

Performance Not Met: 3267F with 8P:

pT category, pN category, Gleason score and statement about margin status were not documented in pathology report, reason not otherwise specified

RATIONALE:

Therapeutic decisions for prostate cancer management are stage driven and cannot be made without a complete set of pathology descriptors. Incomplete pathology reports for prostate cancer may result in misclassification of patients, rework and delays, and suboptimal management. The College of American Pathologists Cancer Committee has produced an evidence-based protocol/checklist of essential pathologic parameters that are recommended to be included in prostate cancer resection pathology reports. Conformance of pathology reports with the CAP checklist is a requirement for Cancer Center certification by the ACS.

The protocol recommends the use of the TNM Staging System for carcinoma of the prostate of the American Joint Committee on Cancer (AJCC) and the International Union Against Cancer (UICC) (AJCC, 2017). The radical prostatectomy checklist also includes extraprostatic extension.

In a study of cancer recurrence following radical prostatectomy, it was noted that “The relatively high proportion of patients who have biopsy-proven local recurrence who have organ-confined disease is probably inaccurate and, in large part, reflects under sampling and under recognition of extraprostatic extension” (Ripple et al 2000, Mod Path).

The CAP Q probes data (2006) indicate that 11.6% of prostate pathology reports had missing elements. Extent of invasion (pTNM) was most frequently missing (52.1% of the reports missing elements), and extraprostatic extension was the second most frequently missing (41.7% of the reports missing elements). Margin status was missing in 8.3% of reports.

A sampling from prostate cancer cases in 2000 through 2001 from the College of Surgeons National Cancer Data Base found only 48.2% of surgical pathology reports for prostate cancer documented pathologic stage similar to the more recent data from the CAP Q probes study. The NCDB data showed the Gleason score was present 86.3% of the time, slightly less than the 100% compliance found in the CAP Q probes study and that margin status was present in 84.9% of reports.

CLINICAL RECOMMENDATION STATEMENTS:

Patient management and treatment guidelines promote an organized approach to providing quality care. The (American College of Surgeons Committee on Cancer) CoC requires that 90% of pathology reports that include a cancer diagnosis contain the scientifically validated data elements outlined in the surgical case summary checklist of the College of American Pathologists (CAP) publication Reporting on Cancer Specimens. The College regards the reporting elements in the “Surgical Pathology Cancer Case Summary (Checklist)” portion of the protocols as essential elements of the pathology report. However, the manner in which these elements are reported is at the discretion of each specific pathologist, taking into account clinician preferences, institutional policies, and individual practice.

Pathologic staging is usually performed after surgical resection of the primary tumor. Pathologic staging depends on pathologic documentation of the anatomic extent of disease, whether or not the primary tumor has been completely removed.

[CAP September 2023 Protocol for the Examination of Radical Prostatectomy Specimens From Patients With Carcinoma of the Prostate Gland](#)

REFERENCES:

Amin MB, Greene FL, Edge SB, Compton CC, Gershengwald JE, Brookland RK, Meyer L, Gress DM, Byrd DR, Winchester DP. The Eighth Edition AJCC Cancer Staging Manual: Continuing to build a bridge from a population-based to a more “personalized” approach to cancer staging. *CA Cancer J Clin*. 2017 Mar;67(2):93-99. doi: 10.3322/caac.21388. Epub 2017 Jan 17. PMID: 28094848.

Gladell P. Paner, MD, FCAP; John R. Srigley, MD; Lara R. Harik, MD, FCAP; et al. (2023) Protocol for the Examination of Radical Prostatectomy Specimens From Patients With Carcinoma of the Prostate Gland [Prostate_4.3.0.0.REL_CAPCP.pdf](#)

Ripple, M., Potter, S., Partin, A. *et al.* Needle Biopsy of Recurrent Adenocarcinoma of the Prostate After Radical Prostatectomy. *Mod Pathol* 13, 521–527 (2000). <https://doi.org/10.1038/modpathol.3880091>

COPYRIGHT:

The measure is not a clinical guideline, does not establish a standard of medical care, and has not been tested for all potential applications.

The measure, while copyrighted, can be reproduced and distributed, without modification, for noncommercial purposes, e.g., use by health care providers in connection with their practices. Commercial use is defined as the sale, license, or distribution of the measure for commercial gain, or incorporation of the measure into a product or service that is sold, licensed or distributed for commercial gain.

THE MEASURES AND SPECIFICATIONS ARE PROVIDED “AS IS” WITHOUT WARRANTY OF ANY KIND.

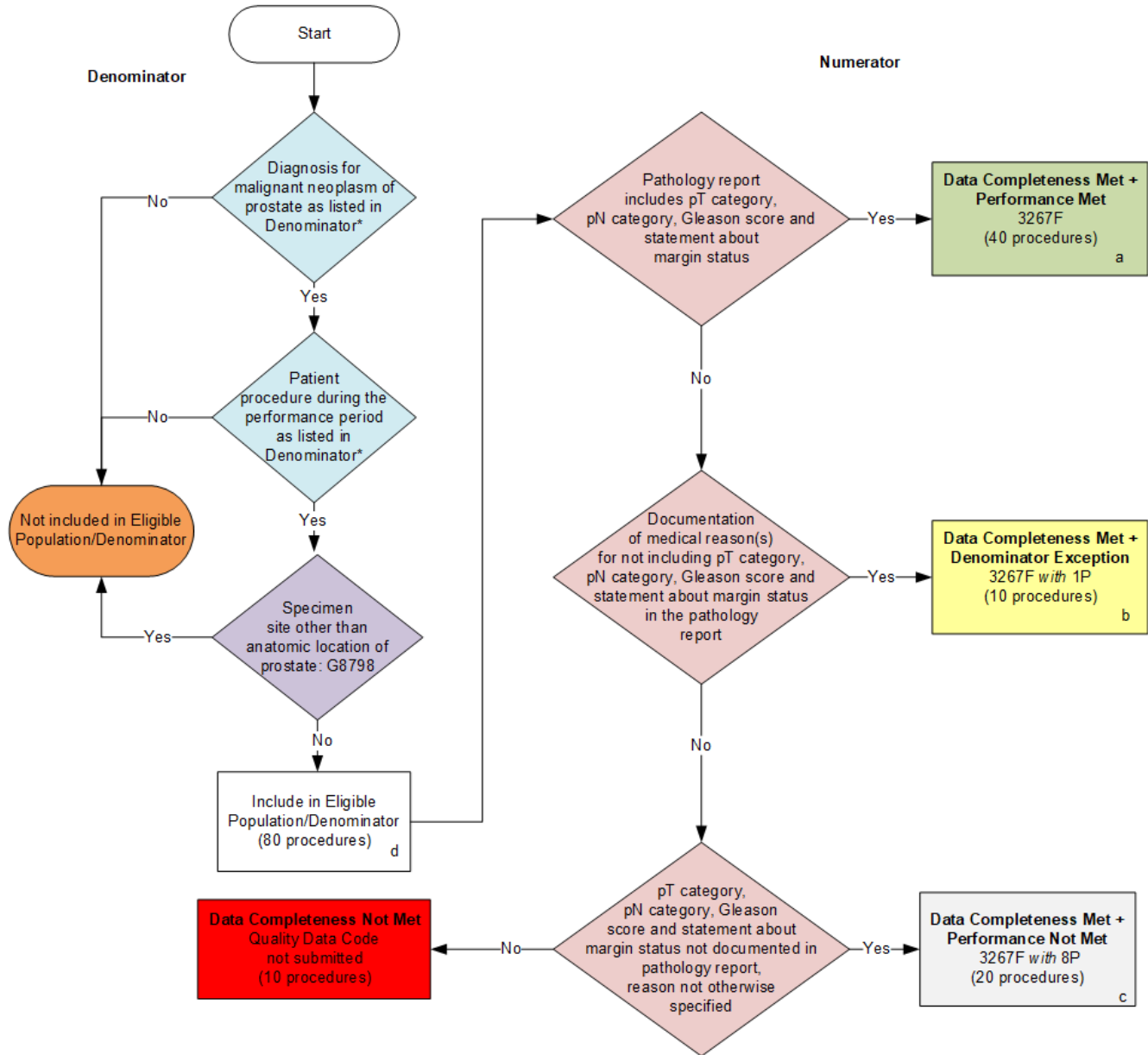
© 2025 College of American Pathologists. All Rights Reserved.

Limited proprietary coding is contained in the Measure specifications for convenience. Users of the proprietary code sets should obtain all necessary licenses from the owners of these code sets. The College of American Pathologists disclaims all liability for use or accuracy of any Current Procedural Terminology (CPT®) or other coding contained in the specifications.

CPT® contained in the Measures specifications is copyright 2004-2025 American Medical Association. ICD-10 is copyright 2025 World Health Organization. All rights reserved.

2026 Medicare Part B Claims Flow for Quality ID #250: Radical Prostatectomy Pathology Reporting

Disclaimer: Refer to the measure specification for specific coding and instructions to submit this measure.



SAMPLE CALCULATIONS

Data Completeness =

$$\frac{\text{Performance Met (a=40 procedures)} + \text{Denominator Exception (b=10 procedures)} + \text{Performance Not Met (c=20 procedures)}}{\text{Eligible Population/Denominator (d=80 procedures)}} = \frac{70 \text{ procedures}}{80 \text{ procedures}} = 87.50\%$$

Performance Rate =

$$\frac{\text{Performance Met (a=40 procedures)}}{\text{Data Completeness Numerator (70 procedures) - Denominator Exception (b=10 procedures)}} = \frac{40 \text{ procedures}}{60 \text{ procedures}} = 66.67\%$$

*See the posted measure specification for specific coding and instructions to submit this measure.

NOTE: Submission Frequency: Procedure

CPT only copyright 2025 American Medical Association. All rights reserved.
 The measure diagrams were developed by CMS as a supplemental resource to be used in conjunction with the measure specifications. They should not be used alone or as a substitution for the measure specification.

v10

**2026 Medicare Part B Claims Flow Narrative for Quality ID #250:
Radical Prostatectomy Pathology Reporting**

Disclaimer: Refer to the measure specification for specific coding and instructions to submit this measure.

1. Start with Denominator
2. Check *Diagnosis for malignant neoplasm of prostate as listed in Denominator**:
 - a. If *Diagnosis for malignant neoplasm of prostate as listed in Denominator**: equals No, do not include in *Eligible Population/Denominator*. Stop processing.
 - b. If *Diagnosis for malignant neoplasm of prostate as listed in Denominator**: equals Yes, proceed to check *Patient procedure during the performance period as listed in Denominator**.
3. Check *Patient procedure during the performance period as listed in Denominator**:
 - a. If *Patient procedure during the performance period as listed in Denominator**: equals No, do not include in *Eligible Population/Denominator*. Stop processing.
 - b. If *Patient procedure during the performance period as listed in Denominator**: equals Yes, proceed to check *Specimen site other than anatomic location of prostate*.
4. Check *Specimen site other than anatomic location of prostate*:
 - a. If *Specimen site other than anatomic location of prostate* equals Yes, do not include in *Eligible Population/Denominator*. Stop processing.
 - b. If *Specimen site other than anatomic location of prostate* equals No, include in *Eligible Population/Denominator*.
5. Denominator Population:
 - Denominator Population is all Eligible Procedures in the Denominator. Denominator is represented as Denominator in the Sample Calculation listed at the end of this document. Letter d equals 80 procedures in the Sample Calculation.
6. Start Numerator
7. Check *Pathology report includes pT category, pN category, Gleason score and statement about margin status*:
 - a. If *Pathology report includes pT category, pN category, Gleason score and statement about margin status* equals Yes, include in *Data Completeness Met and Performance Met*.

- *Data Completeness Met and Performance Met* letter is represented in the Data Completeness and Performance Rate in the Sample Calculation listed at the end of this document. Letter a equals 40 procedures in Sample Calculation.
- b. If *Pathology report includes pT category, pN category, Gleason score and statement about margin status* equals No, proceed to check *Documentation of medical reason(s) for not including pT category, pN category, Gleason score and statement about margin status in the pathology report*.
8. Check *Documentation of medical reason(s) for not including pT category, pN category, Gleason score and statement about margin status in the pathology report*:
 - a. If *Documentation of medical reason(s) for not including pT category, pN category, Gleason score and statement about margin status in the pathology report* equals Yes, include in *Data Completeness Met and Denominator Exception*.
 - *Data Completeness Met and Denominator Exception* letter is represented in the Data Completeness and Performance Rate in the Sample Calculation listed at the end of this document. Letter b equals 10 procedures in the Sample Calculation.
 - b. If *Documentation of medical reason(s) for not including pT category, pN category, Gleason score and statement about margin status in the pathology report* equals No, proceed to check *pT category, pN category, Gleason score and statement about margin status not documented in pathology report, reason not otherwise specified*.
 9. Check *pT category, pN category, Gleason score and statement about margin status not documented in pathology report, reason not otherwise specified*:
 - a. If *pT category, pN category, Gleason score and statement about margin status not documented in pathology report, reason not otherwise specified* equals Yes, include in the *Data Completeness Met and Performance Not Met*.
 - *Data Completeness Met and Performance Not Met* letter is represented in the Data Completeness in the Sample Calculation listed at the end of this document. Letter c equals 20 procedures in the Sample Calculation.
 - b. If *pT category, pN category, Gleason score and statement about margin status not documented in pathology report, reason not otherwise specified* equals No, proceed to check *Data Completeness Not Met*.
 10. Check *Data Completeness Not Met*:
 - If *Data Completeness Not Met*, the Quality Data Code was not submitted. 10 procedures have been subtracted from Data Completeness Numerator in the Sample Calculation.

Sample Calculations

Data Completeness equals Performance Met (a equals 40 procedures) plus Denominator Exception (b equals 10 procedures) plus Performance Not Met (c equals 20 procedures) divided by Eligible Population/Denominator (d equals 80 procedures). All equals 70 procedures divided by 80 procedures. All equals 87.50 percent.

Performance Rate equals Performance Met (a equals 40 procedures) divided by Data Completeness Numerator (70 procedures) minus Denominator Exclusion (x equals 0 procedures) minus Denominator Exception (b equals 10 procedures). All equals 40 procedures divided by 60 procedures. All equals 66.67 percent.

*See the posted measure specification for specific coding and instructions to submit this measure.

NOTE: Submission Frequency: Procedure

The measure diagrams were developed by CMS as a supplemental resource to be used in conjunction with the measure specifications. They should not be used alone or as a substitution for the measure specification.