

## Quality ID #397: Melanoma Reporting

### 2026 COLLECTION TYPE:

MERIT-BASED INCENTIVE PAYMENT SYSTEM (MIPS) MEDICARE PART B CLAIMS

### MEASURE TYPE:

Process – High Priority

### DESCRIPTION:

Pathology reports for primary malignant cutaneous melanoma that include the pT category, thickness, ulceration and mitotic rate, peripheral and deep margin status and presence or absence of microsatellitosis for invasive tumors.

### INSTRUCTIONS:

#### **Reporting Frequency:**

This measure is to be submitted for each procedure that is denominator eligible as defined in the denominator criteria.

#### **Intent and Clinician Applicability:**

The intent of this measure is to assess that biopsy and excision pathology reports for patients with primary malignant cutaneous melanoma include the pT category, thickness, ulceration and mitotic rate, peripheral and deep margin status and presence or absence of microsatellitosis for invasive tumors. This measure may be submitted by Merit-based Incentive Payment System (MIPS) eligible clinicians who perform the quality actions as defined by the numerator based on the services provided and the measure-specific denominator coding.

#### **Measure Strata and Performance Rates:**

This measure contains one strata defined by a single submission criteria.

This measure produces a single performance rate.

#### **Implementation Considerations:**

For purposes of MIPS implementation, this procedure measure is submitted each time a procedure is performed during the performance period. Only one quality data code (QDC) per date of service for a patient is required. In instances where multiple specimens from different/unique lesions are submitted and resulted in a single report, each eligible specimen must be Met in order for the case to be considered Met (Denominator Exclusions and Denominator Exceptions are not considered eligible specimens). If any eligible specimen is Not Met, the quality data code for Not Met should be submitted for this report.

#### **Telehealth:**

**NOT TELEHEALTH ELIGIBLE:** This measure is not appropriate for nor applicable to the telehealth setting. This measure is procedure based and therefore doesn't allow for the denominator criteria to be conducted via telehealth. It would be appropriate to remove these patients from the denominator eligible patient population. Telehealth eligibility is at the measure level for inclusion within the denominator eligible patient population and based on the measure specification definitions which are independent of changes to coding and/or billing practices.

#### **Measure Submission:**

Measure data may be submitted by individual MIPS eligible clinicians using Medicare Part B claims. The listed denominator criteria are used to identify the intended patient population. The numerator quality data codes included in this specification are used to submit the quality actions allowed by the measure on the claim form(s). All measure-specific coding should be submitted on the claim(s) representing the denominator eligible encounter and denominator exclusion(s) (as applicable) or selected numerator option. Denominator exclusions describe a circumstance where the patient should be removed from the denominator. Within Medicare Part B claims submissions, denominator exclusions identify circumstances where the patient should be removed from the performance rate calculation prior to determining which numerator outcome is appropriate.

ODCs are available to describe the denominator exclusion within the Measure Specification and should be submitted on the claim.

**DENOMINATOR:**

All pathology reports for primary malignant cutaneous melanoma covering biopsies and excisions to include wide excisions and re-excisions.

**Denominator Criteria (Eligible Cases):**

Patients ≥ 18 years of age on date of service

**AND**

Diagnosis for malignant cutaneous melanoma (ICD-10-CM): C43.0, C43.20, C43.21, C43.22, C43.30, C43.31, C43.39, C43.4, C43.51, C43.52, C43.59, C43.60, C43.61, C43.62, C43.70, C43.71, C43.72, C43.8, C43.9

**AND**

Patient procedure during performance period (CPT): 88305

**AND NOT**

**DENOMINATOR EXCLUSION:**

If Patient is not Eligible for this Measure because the Specimen is not of Cutaneous Origin

Specimen site other than anatomic cutaneous location: G9430

**NUMERATOR:**

Pathology reports for primary malignant cutaneous melanoma that include the pT category, thickness, ulceration and mitotic rate, peripheral and deep margin status and presence or absence of microsatellitosis for invasive tumors.

**Numerator Instructions:**

The intent of the measure is to only include pathology reports for primary malignant cutaneous melanoma that may be staged with the following components: pT category, thickness, ulceration and mitotic rate, peripheral and deep margin status and presence or absence of microsatellitosis for invasive tumors. Melanoma in situ cases do not meet the criteria for this denominator. In the instance a pathology report meets the denominator criteria, but represents a diagnosis of Melanoma in situ G9430 should be utilized.

**Pathology Reports that Include the pT Category and a Statement on Thickness, Ulceration and Mitotic Rate**

*Performance Met:* G9428:

Pathology report includes the pT Category, thickness, ulceration and mitotic rate, peripheral and deep margin status and presence or absence of microsatellitosis for invasive tumors

**OR**

**Pathology Reports that do not Include the pT Category, Thickness, Ulceration and Mitotic rate Peripheral and Deep Margin Status and presence or absence of Microsatellitosis, not Documented for Medical Reasons**

*Denominator Exception:* G9429:

Documentation of medical reason(s) for not including pT Category, thickness, ulceration and mitotic rate, peripheral and deep margin status and presence or absence of microsatellitosis for invasive tumors (e.g., negative skin biopsies, insufficient tissue, or other documented medical reasons)

**OR**

**Pathology Reports that do not Include the pT Category, Thickness, Ulceration and Mitotic rate Peripheral and Deep Margin Status and presence or absence of Microsatellitosis, Reason not given**

*Performance Not Met:* G9431:

Pathology report does not include the pT Category, thickness, ulceration and mitotic rate, peripheral and deep margin status and presence or absence of microsatellitosis for invasive tumors

**RATIONALE:**

Research and the publication of new guidelines in 2017 indicate newer tumor characteristics for more precise staging, with implications for treatment outcomes. In 2017, the American Joint Committee on Cancer (AJCC) Melanoma Expert Panel introduced several important changes to the Tumor, Nodes, Metastasis (TNM) classification. The relevant change for this measure in the eighth edition AJCC Cancer Staging Manual include: 1) tumor thickness measurements to be recorded to the nearest 0.1 mm, not 0.01 mm; 2) definitions of T1a and T1b are revised (T1a, <0.8 mm without ulceration; T1b, 0.8-1.0 mm with or without ulceration or <0.8 mm with ulceration), with mitotic rate no longer a T category criterion. (Gershenwald et al.) The new guidelines state: "As supported by this univariate analysis and previous reports, the mitotic rate is likely an important prognostic determinant when evaluated using its dynamic range across melanomas of all tumor thickness categories. Therefore, the AJCC Melanoma Expert Panel strongly recommends that mitotic rate be assessed and recorded for all primary melanomas, although it is not used for T1 staging in the eighth edition. The mitotic rate will likely be an important parameter for inclusion in the future development of prognostic models applicable to individual patients." (<http://onlinelibrary.wiley.com/doi/10.3322/caac.21409/pdf>)

The American Academy of Dermatology updated guidelines for management of primary cutaneous melanoma. In addition to re-affirming the importance of thickness, ulceration and mitotic rate ("There is strong evidence that at least 3 histologic features of the primary tumor are dominant predictors of outcome: Breslow thickness, ulceration, and dermal mitotic rate"), these guidelines also emphasized the importance of other elements include peripheral and deep margin status, microsatellitosis and lymphovascular invasion (Swetter et al). For margin status, the guidelines note that "An additional essential element of the pathology report is the status of the peripheral and deep margins (positive or negative) of the specimen. Presence or absence of tumor at the surgical margin indicates whether the entire lesion was available for histologic evaluation and provides guidance for further management." Microsatellites, or tumors nests in the vicinity of the main invasive tumor, are an important component of the eighth edition of the AJCC staging system and per the AAD guideline "the presence or absence of microscopic satellites must be reported for accurate staging."

#### **CLINICAL RECOMMENDATION STATEMENT:**

There is strong evidence that at least 3 histologic features of the primary tumor are dominant predictors of outcome: Breslow thickness, ulceration, and dermal mitotic rate.

An additional essential element of the pathology report is the status of the peripheral and deep margins (positive or negative) of the specimen.

Depending on the specific T- and N-category criteria, such patients would be staged as either stage IIIC or IIID. Therefore, the presence or absence of microscopic satellites must be reported for accurate staging.

#### **REFERENCES:**

Gershenwald, J. E., Scolyer, R. A., Hess, K. R., Sondak, V. K., Long, G. V., Ross, M. I., Lazar, A. J., Faries, M. B., Kirkwood, J. M., McArthur, G. A., Haydu, L. E., Eggermont, A. M. M., Flaherty, K. T., Balch, C. M., Thompson, J. F. and for members of the American Joint Committee on Cancer Melanoma Expert Panel and the International Melanoma Database and Discovery Platform (2017), Melanoma staging: Evidence-based changes in the American Joint Committee on Cancer eighth edition cancer staging manual. CA: A Cancer Journal for Clinicians, 67: 472–492  
<http://onlinelibrary.wiley.com/doi/10.3322/caac.21409/full>

Swetter SM, Tsao H, Bichakjian CK, Curiel-Lewandrowski C, Elder DE, Gershenwald JE, Guild V, Grant-Kels JM, Halpern AC, Johnson TM, Sober AJ, Thompson JA, Wisco OJ, Wyatt S, Hu S and Lamina T. (2018) Guidelines of care for the management of primary cutaneous melanoma. J Am Acad Dermatol 80 (1): 208-250. [https://www.jaad.org/article/S0190-9622\(18\)32588-X/fulltext](https://www.jaad.org/article/S0190-9622(18)32588-X/fulltext)

Priyadharsini Nagarajan, MD, PhD ; Wonwoo Shon, DO; Klaus J. Busam, MD;; David P. Frishberg, MD; et al.(2025). Protocol for the Examination of Excision Specimens From Patients With Melanoma of the Skin. College of American Pathologists. [Skin.Inv Melanoma.Res 1.2.0.0.REL.CAPCP.pdf](#)

Priyadharsini Nagarajan, MD, PhD ;Wonwoo Shon, DO; Klaus J. Busam, MD ;David P. Frishberg, MD; et al.(2025). Protocol for the Examination of Biopsy Specimens From Patients With Melanoma of the Skin. College of American Pathologists. [Skin.Inv Melanoma.Bx 1.1.0.0.REL.CAPCP.pdf](#)

**COPYRIGHT:**

The measure is not a clinical guideline, does not establish a standard of medical care, and has not been tested for all potential applications.

The measure, while copyrighted, can be reproduced and distributed, without modification, for noncommercial purposes, e.g., use by health care providers in connection with their practices. Commercial use is defined as the sale, license, or distribution of the measure for commercial gain, or incorporation of the measure into a product or service that is sold, licensed or distributed for commercial gain.

**THE MEASURES ARE PROVIDED "AS IS" WITHOUT WARRANTY OF ANY KIND.**

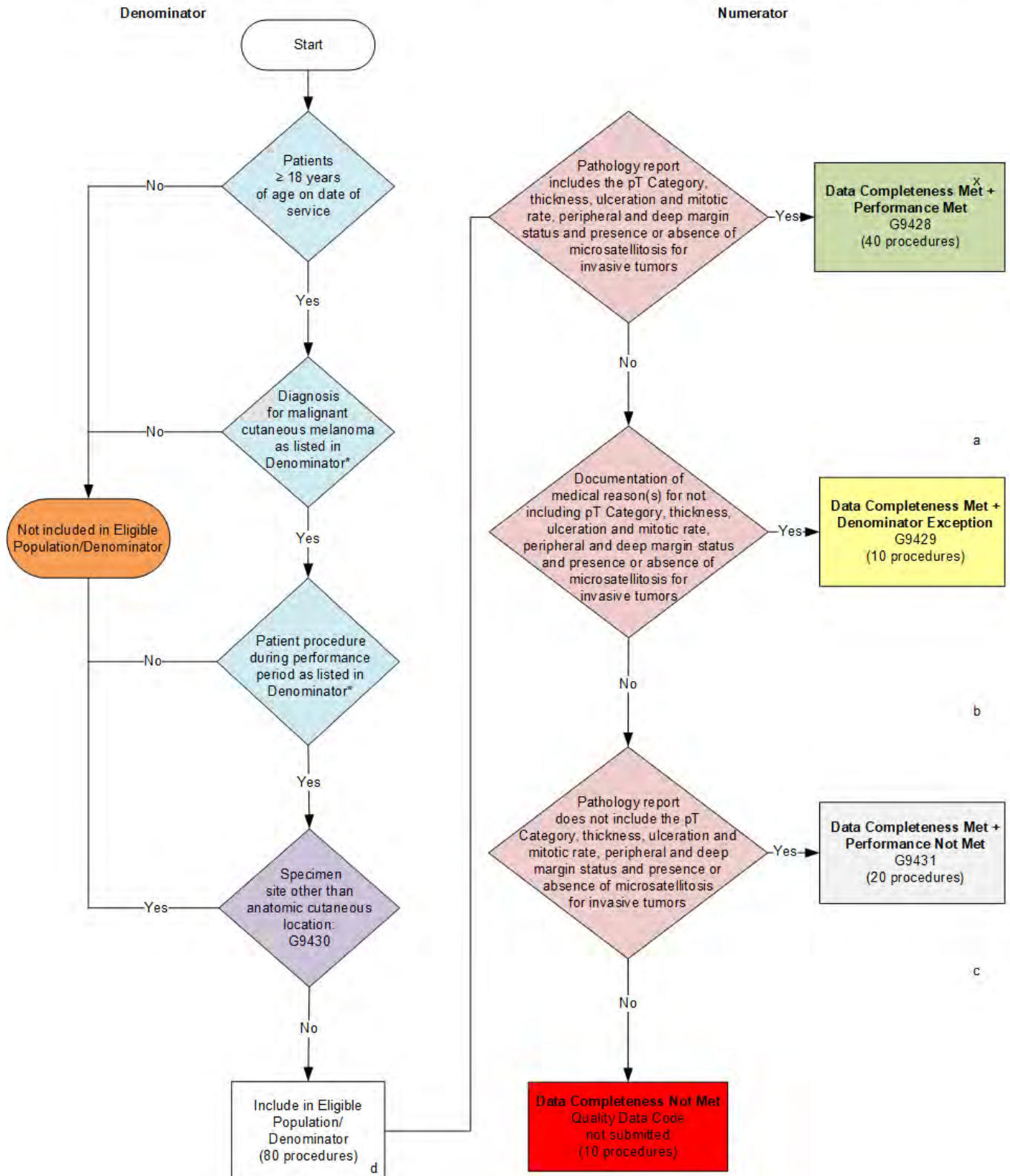
© 2025 College of American Pathologists. All Rights Reserved

Limited proprietary coding is contained in the Measure specifications for convenience. Users of the proprietary code sets should obtain all necessary licenses from the owners of these code sets. The College of American Pathologists disclaims all liability for use or accuracy of any Current Procedural Terminology (CPT®) or other coding contained in the specifications.

CPT® contained in the Measures specifications is copyright 2004-2024 American Medical Association. ICD-10 is copyright 2024 World Health Organization. All Rights Reserved.

## 2026 Medicare Part B Claims Flow for Quality ID #397: Melanoma Reporting

**Disclaimer:** Refer to the measure specification for specific coding and instructions to submit this measure.



#### SAMPLE CALCULATIONS

**Data Completeness=**

$$\frac{\text{Performance Met (a=40 procedures)} + \text{Denominator Exception (b}^1\text{+b}^2\text{=10 procedures)} + \text{Performance Not Met (c=20 procedures)}}{\text{Eligible Population / Denominator (d=80 procedures)}} = \frac{70 \text{ procedures}}{80 \text{ procedures}} = 87.50\%$$

**Performance Rate=**

$$\frac{\text{Performance Met (a=40 procedures)}}{\text{Data Completeness Numerator (70 procedures) – Denominator Exception (b}^1\text{+b}^2\text{=10 procedures)}} = \frac{40 \text{ procedures}}{60 \text{ procedures}} = 66.67\%$$

\*See the posted measure specification for specific coding and instructions to submit this measure.

NOTE: Submission Frequency: Procedure

CPT only copyright 2025 American Medical Association. All rights reserved.  
The measure diagrams were developed by CMS as a supplemental resource to be used  
in conjunction with the measure specifications. They should not be used alone or as a  
substitution for the measure specification.

v10

## 2026 Medicare Part B Claims Flow Narrative for Quality ID #397: Melanoma Reporting

**Disclaimer:** Refer to the measure specification for specific coding and instructions to submit this measure.

1. Start with Denominator
2. Check *Patients greater than or equal to 18 years of age on date of service*:
  - a. If *Patients greater than or equal to 18 years of age on date of service* equals No, do not include in *Eligible Population/Denominator*. Stop processing.
  - b. If *Patients greater than or equal to 18 years of age on date of service* equals Yes, proceed to check *Diagnosis for malignant cutaneous melanoma as listed in Denominator\**.
3. Check *Diagnosis for malignant cutaneous melanoma as listed in Denominator\**:
  - a. If *Diagnosis for malignant cutaneous melanoma as listed in Denominator\** equals No, do not include in *Eligible Population/Denominator*. Stop processing.
  - b. If *Diagnosis for malignant cutaneous melanoma as listed in Denominator\** equals Yes, proceed to check *Patient procedure during performance period as listed in Denominator\**.
4. Check *Patient procedure during performance period as listed in Denominator\**:
  - a. If *Patient procedure during performance period as listed in Denominator\** equals No, do not include in *Eligible Population/Denominator*. Stop processing.
  - b. If *Patient procedure during performance period as listed in Denominator\** equals Yes, proceed to check *Specimen site other than anatomic cutaneous location*.
5. Check *Specimen site other than anatomic cutaneous location*:
  - a. If *Specimen site other than anatomic cutaneous location* equals Yes, do not include in *Eligible Population/Denominator*. Stop processing.
  - b. If *Specimen site other than anatomic cutaneous location* equals No, include in *Eligible Population/Denominator*.
6. Denominator Population:
  - Denominator Population is all Eligible Procedures in the Denominator. Denominator is represented as Denominator in the Sample Calculation listed at the end of this document. Letter d equals 80 procedures in the Sample Calculation.
7. Start Numerator
8. Check *Pathology report includes the pT Category, thickness, ulceration and mitotic rate, peripheral and deep margin status and presence or absence of microsatellitosis for invasive tumors*:
  - a. If *Pathology report includes the pT Category, thickness, ulceration and mitotic rate, peripheral and deep margin status and presence or absence of microsatellitosis for invasive tumors* equals Yes, include in *Data Completeness Met and Performance Met*.
    - *Data Completeness Met and Performance Met* letter is represented in the Data Completeness and Performance Rate in the Sample Calculation listed at the end of this document. Letter a equals 40 procedures in Sample Calculation.
  - b. If *Pathology report includes the pT Category, thickness, ulceration and mitotic rate, peripheral and deep margin status*

and presence or absence of microsatellitosis for invasive tumors equals No, proceed to check Documentation of medical reason(s) for not including pT Category, thickness, ulceration and mitotic rate, peripheral and deep margin status and presence or absence of microsatellitosis for invasive tumors.

9. Check *Documentation of medical reason(s) for not including pT Category, thickness, ulceration and mitotic rate, peripheral and deep margin status and presence or absence of microsatellitosis for invasive tumors*:
  - a. If *Documentation of medical reason(s) for not including pT Category, thickness, ulceration and mitotic rate, peripheral and deep margin status and presence or absence of microsatellitosis for invasive tumors* equals Yes, include in *Data Completeness Met and Denominator Exception*.
    - Data Completeness Met and Denominator Exception letter is represented in the Data Completeness and Performance Rate in the Sample Calculation listed at the end of this document. Letter b equals 10 procedures in the Sample Calculation.
  - b. If *Documentation of medical reason(s) for not including pT Category, thickness, ulceration and mitotic rate, peripheral and deep margin status and presence or absence of microsatellitosis for invasive tumors* equals No, proceed to check *Pathology report does not include the pT Category, thickness, ulceration and mitotic rate, peripheral and deep margin status and presence or absence of microsatellitosis for invasive tumors*.
10. Check *Pathology report does not include the pT Category, thickness, ulceration and mitotic rate, peripheral and deep margin status and presence or absence of microsatellitosis for invasive tumors*:
  - a. If *Pathology report does not include the pT Category, thickness, ulceration and mitotic rate, peripheral and deep margin status and presence or absence of microsatellitosis for invasive tumors* equals Yes, include in *Data Completeness Met and Performance Not Met*.
    - *Data Completeness Met and Performance Not Met* letter is represented in the Data Completeness in the Sample Calculation listed at the end of this document. Letter c equals 20 procedures in the Sample Calculation.
  - b. If *Pathology report does not include the pT Category, thickness, ulceration and mitotic rate, peripheral and deep margin status and presence or absence of microsatellitosis for invasive tumors* equals No, proceed to check *Data Completeness Not Met*.
11. Check *Data Completeness Not Met*:
  - If *Data Completeness Not Met*, the Quality Data Code was not submitted. 10 procedures have been subtracted from the Data Completeness Numerator in the Sample Calculation.

### Sample Calculations

Data Completeness equals Performance Met (a equals 40 procedures) plus Denominator Exception (b equals 10 procedures) plus Performance Not Met (c equals 20 procedures) divided by Eligible Population / Denominator (d equals 80 procedures). All equals 70 procedures divided by 80 procedures. All equals 87.50 percent.

Performance Rate equals Performance Met (a equals 40 procedures) divided by Data Completeness Numerator (70 procedures) minus Denominator Exception (b equals 10 procedures). All equals 40 procedures divided by 60 procedures. All equals 66.67 percent.



\*See the posted measure specification for specific coding and instructions to submit this measure.

NOTE: Submission Frequency: Procedure

The measure diagrams were developed by CMS as a supplemental resource to be used in conjunction with the measure specifications. They should not be used alone or as a substitution for the measure specification.