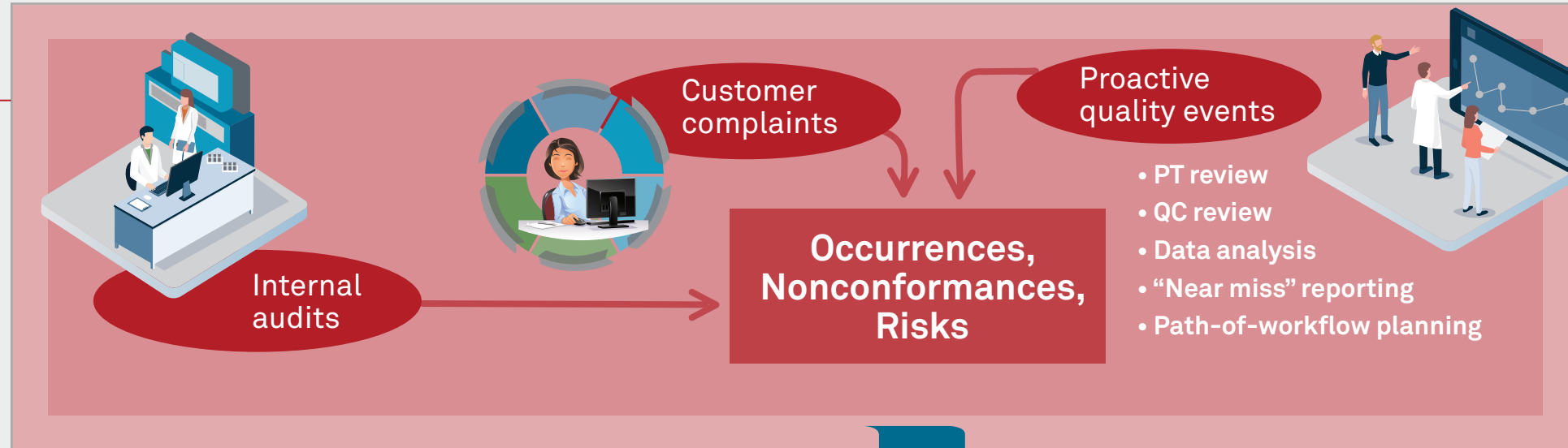


RISK MANAGEMENT for Laboratory Excellence

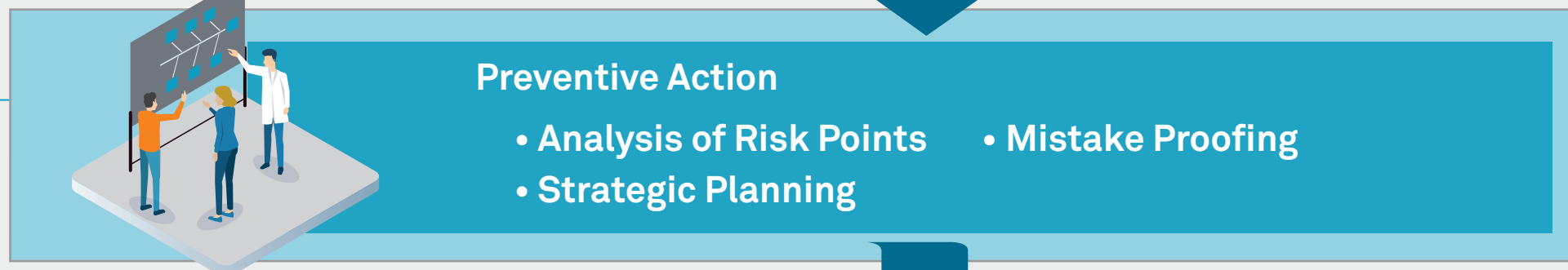
IDENTIFY RISKS



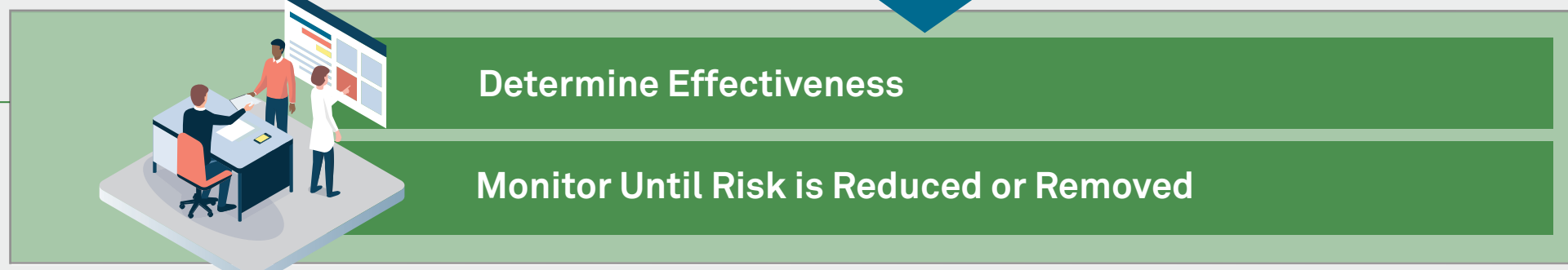
EVALUATE RISKS



CONTROL RISKS



MONITOR RISKS

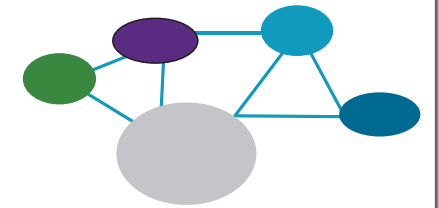


Risk Management Best Practices

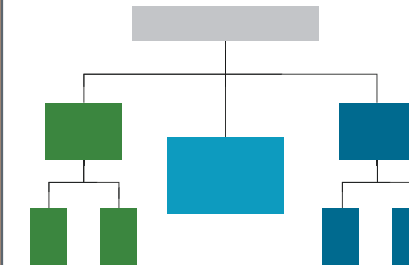
Maintain a risk register to keep track of priorities

Risks	Priority
-----	Yellow
-----	Green
-----	Yellow
-----	Red

Use management review meetings to maintain a system view of risks



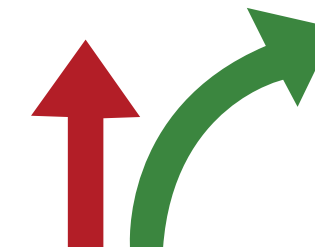
Hold periodic risk meetings in all departments



Create informal systems for logging risks



Assess risks before any significant process or resource change



Monitor your culture – make sure people can speak up



Interested in learning more about risk management? The CAP's QMED™ course, Risk Management, provides best practices along with tools and templates. Earn four CE credits. For more information, visit cap.org and search QMED.