



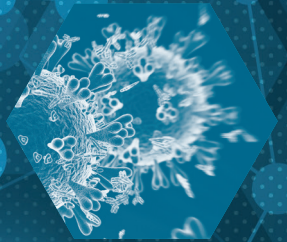
COLLEGE of AMERICAN
PATHOLOGISTS

Laboratory Quality Solutions

Proficiency Testing/ External Quality Assessment

Empower your lab with the trusted expertise of the CAP

Whether you are performing routine diagnostics or leading innovation in emerging applications, PT/EQA programs from the College of American Pathologists (CAP) help ensure accuracy, benchmark against top labs worldwide, and provide a valuable tool for improving patient care. Partner with the CAP for success today and in preparation for the future.

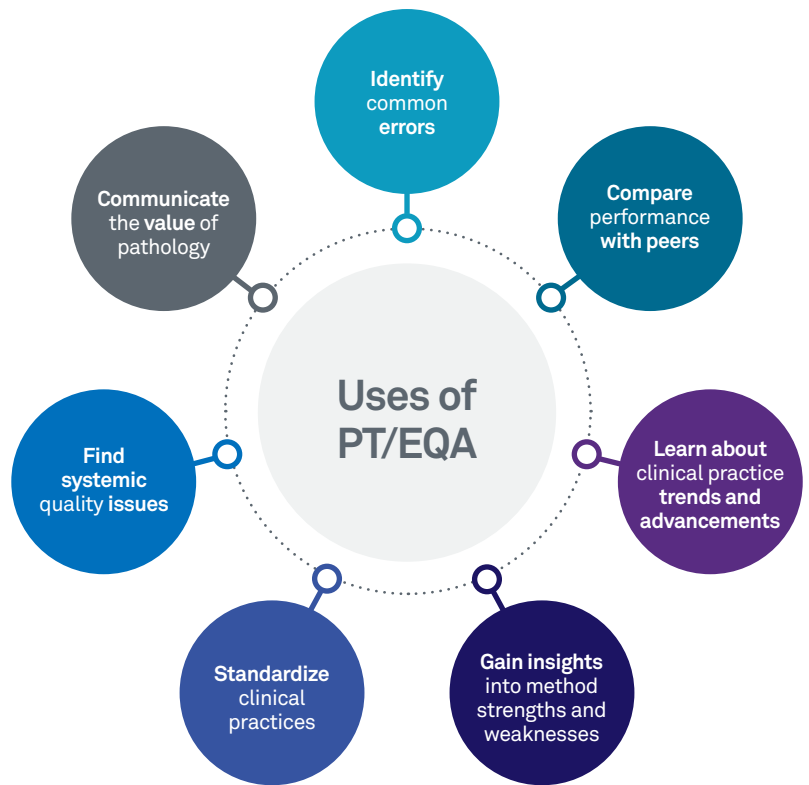


The importance of PT/EQA.

Accurate lab results are essential for effective treatment and better patient outcomes. External quality assessment (EQA), also known as proficiency testing (PT), supports this by strengthening quality management.

PT/EQA:

- Provides objective external performance review
- Supports continuous improvement beyond simply pass/fail results
- Enhances patient care through better lab practices



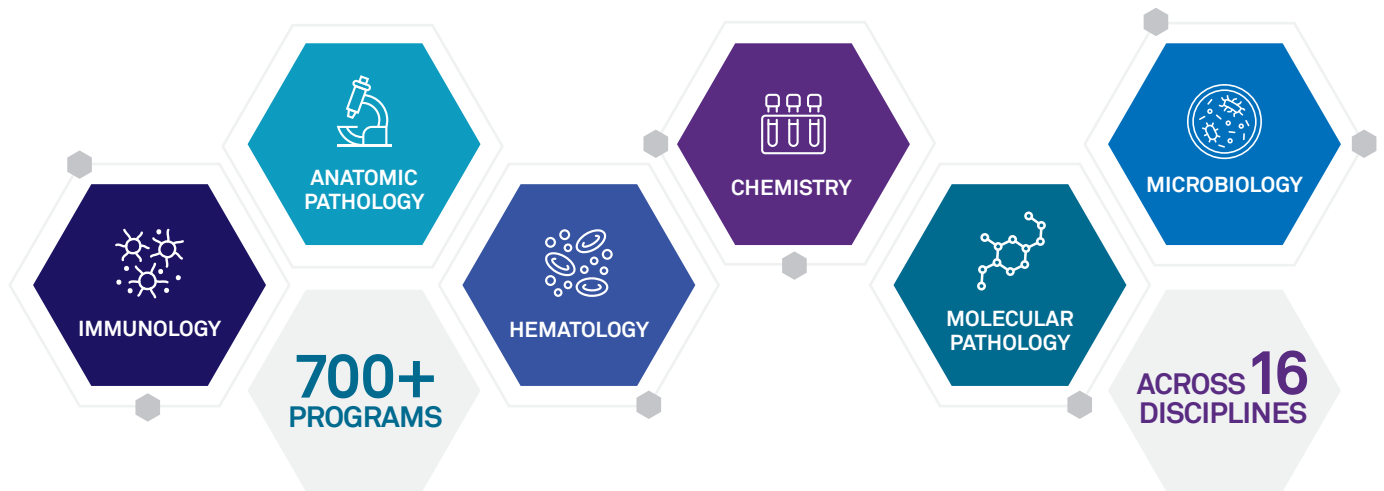
Why choose the CAP for PT/EQA?



The CAP: Exclusively Focused on Laboratory Medicine

In 1949, the College of American Pathologists (CAP) launched its first program to evaluate the accuracy and reduce the variability of common laboratory measurements (like glucose), with 500 labs participating. Since then, the CAP has expanded to offer over 700 PT/EQA programs worldwide, along with a broad range of laboratory quality solutions and resources.

Stay accurate. Stay current. Stay confident—with the CAP.



Comprehensive Range

Covers both anatomic and clinical pathology, including routine and esoteric testing needs.



Clinically Relevant Challenges

Reflects real clinical scenarios to ensure practical, meaningful assessment.



Expert-Driven Programs

Designed and supported by pathologists and lab professionals with discipline-specific knowledge.



High-Quality Specimens

Offers many programs accredited to the ISO/IEC 17043 standard.

Discover how we can meet your testing needs.

CAP PT/EQA evolves and grows—our programs are reviewed annually to stay ahead of testing trends and technological advances.



See what's available, including these NEW programs for 2026:

- Dengue Virus Serology (DENS)
- HIV-1/HIV-2 Detection and Differentiation, Molecular (HVDD)

Challenge your testing with real-world conditions.



Reflecting Clinical Use

Process PT/EQA using a similar workflow as patient samples, as they mimic real clinical specimens.



Critical Decision Points

Test multiple specimens covering a range of clinically relevant values.



Ready-to-Use Samples

Avoid introducing preanalytical errors that can occur when samples need to be reconstituted.



Discipline-Specific Application

Support testing needs across many specialties and detection methods—including assays for molecular oncology and NGS.



Unlock the power of every result—test, compare, learn, improve.

Excerpt of an Individual Evaluation Report

COLLEGE of AMERICAN PATHOLOGISTS 325 Waukegan Road, Northfield, Illinois 60093-2750 800-323-6040 • cap.org		CAP No. 2 Institution: Attention:	Peer Group Size	Kit ID: Kit Mailed: 3/3/2025 Original Evaluation: 4/15/2025							
EVALUATION ORIGINAL 1		Peer Statistics	Acceptable Range	Performance 1	Historical Plot 3						
Test	Unit of Measure Peer Group	Specimen	Evaluation and Comparative Method Statistics			Plot of the Relative Distribution of Target as Percentages of allowed Deviation					
		Your Result	Mean	S.D.	No. of Labs	S.D.I.	Lower	Upper	Acceptability	Your Grade	Survey
Bilirubin, total umol/L DIAZONIUM-DYPHYLL/TBIL VITROS CHEM SYSTEMS	CHM-01	45.0	38.78	6.10	670	+1.0	31.0	46.6	Acceptable		
		64.0	52.18	6.91	670	+1.7	41.7	62.7	Unacceptable		
		99.0	91.52	6.01	664	+1.2	73.2	109.9	Acceptable		
		5.0	3.01	1.42	450	+1.4	0.0	9.9	Acceptable		
		52.0	45.41	5.51	669	+1.2	36.3	54.5	Acceptable		
Calcium, serum mmol/L ARSENAZO III DYE VITROS CHEM SYSTEMS	CHM-01	2.09	2.109	0.040	663	-0.5	1.85	2.36	Acceptable		
		2.36	2.372	0.046	665	-0.3	2.12	2.63	Acceptable		
		2.41	2.389	0.052	666	+0.4	2.13	2.64	Acceptable		
		3.25	3.255	0.059	663	-0.1	3.00	3.51	Acceptable		
		1.31	1.342	0.037	659	-0.9	1.09	1.60	Acceptable		
Chloride mmol/L ION SELECT ELECT UNDIR VITROS CHEM SYSTEMS	CHM-01	106	105.4	1.4	658	+0.4	100	111	Acceptable		
		104	105.0	1.4	666	+0.7	97	109	Acceptable		
		104	104.7	1.5	662	-0.5	99	110	Acceptable		
		88	88.0	1.4	661	0.0	83	93	Acceptable		
		115	115.8	1.4	657	-0.6	110	122	Acceptable		
CO2 mmol/L ENZYMATIC VITROS CHEM SYSTEMS	CHM-01	28	26.1	1.8	632	+1.1	20	32	Acceptable		
		28	25.6	1.6	630	+1.5	20	31	Acceptable		
		29	28.6	1.4	633	+0.3	22	35	Acceptable		
		14	13.8	1.4	628	+0.1	11	17	Acceptable		
		34	31.3	2.2	630	+1.2	25	38	Acceptable		

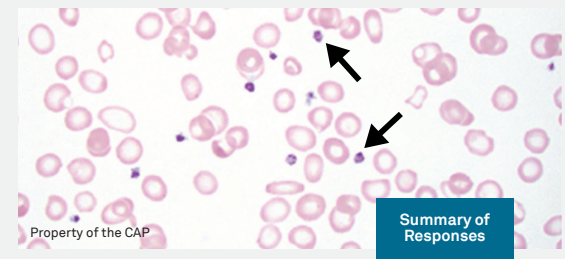
Analyte

Units of Measure

Method or Instrument

- Robust Testing**
Evaluate performance with multiple specimens per test event—just one outlier prompts valuable troubleshooting.
- Global Benchmarking**
Get statistically significant comparisons with large peer groups from over 115 countries, all using the same samples.
- Visible Patterns**
Review past testing cycles to spot bias or shifts and proactively prevent issues before they affect patient results.
- Staff Development**
Uncover training opportunities, use the educational write-ups in the Participant Summaries, and take advantage of free CE courses—available with select PT/EQA programs—for continuous learning.

Excerpt of a Participant Summary



Identification	Referees		Participants		Evaluation
	N	%	N	%	
Platelet, normal	180	99.5	5335	99.7	Good
Blast cell	1	.05	2	0.0	Acceptable

4
Educational Discussion by Committee

The arrowed cells were correctly identified as normal platelets by 99.5% of referees and 99.7% of participants. Platelets, also known as thrombocytes, are small, blue-gray fragments of megakaryocytic cytoplasm. Most measure 1.5 to 3 µm in diameter. A few small platelets, less than 1.5 µm in diameter, and a few large platelets, 4 to 7 µm in diameter, may also be seen in normal blood films. Fine, purple-red granules are dispersed throughout the cytoplasm or are sometimes aggregated at the center. These granules are platelet alpha granules. Platelet delta granules (or dense granules) are not visible on light microscopy. Platelets may be variable in shape, but most normal platelets are round or very slightly elliptical. Some have short cytoplasmic projections or ruffled margins. They are typically single but may form aggregates, particularly in fresh (fingerstick) preparations.

Designed by experts. Powered by data. Focused on patient outcomes.

CAP PT/EQA programs provide meaningful challenges and practical insights with pathologist expertise and comparisons from peers around the world.

FEATURES	CAP	OTHERS
FOCUS	Founded in 1946 by pathologists for pathology	Varies
PROGRAM DESIGN & DEVELOPMENT	25+ scientific committees with input from pathologists and lab medicine professionals	Varies
SCOPE OF OFFERING	Comprehensive, with 700+ programs covering a wide range including clinical, anatomic, and molecular/next-generation sequencing	Many focus on limited scope, only offering routine or specialized tests
NEW PT/EQA PROGRAMS	Annually reviewed with multiple new programs added each year	Minimal
QUALITY OF SPECIMENS	Many liquid-based specimens, with programs designed to mimic patient testing	Often include lyophilized material
AVERAGE FREQUENCY OF TESTING EVENTS	2–3 times per year	Bi-weekly, monthly, quarterly
AVERAGE NUMBER OF SPECIMENS	Most programs have 3–5 per testing event (ie, approximately 12–15 for full year)	Many send one sample per testing event (ie, fewer overall)
REACH AND SIZE	In 115+ countries with over 23,000 laboratories participating	Some compare only nationally or regionally

Supporting your successful outcomes— yesterday, today, and tomorrow.

With more than 75 years of exclusive focus on pathology and laboratory medicine, the CAP is uniquely qualified to provide the programs, resources, and expertise you need to elevate your quality.

In addition to PT/EQA, our laboratory quality solutions include:

- Laboratory accreditation
- Instrumentation and validation tools
- Quality management tools
- Competency assessment



**COLLEGE of AMERICAN
PATHOLOGISTS**

325 Waukegan Road
Northfield, IL 60093-2750, USA

Contact us at
international@cap.org
to learn more or
visit us online at
cap.org/international.

