



CMS Measure ID/CMS QCDR ID: CAP 23

Measure Title: Cancer Protocol and Turnaround Time for Carcinoma and Carcinosarcoma of the Endometrium

Measure Specifications

<p>Measure Description</p>	<p>Percentage of all eligible carcinoma and carcinosarcoma of the endometrium specimens for which all required data elements of the Cancer Protocol are included</p> <p>AND</p> <p>meet the maximum 4 business day turnaround time (TAT) requirement (Report Date – Accession Date ≤ 4 business days).¹</p> <p>INSTRUCTIONS: This measure has two performance rates that contribute to the overall performance score:</p> <ol style="list-style-type: none"> 1. Percent of cases for which all required data elements of the cancer protocol are included. 2. Percent of cases that meet the maximum 4 business day turnaround time. <p>The overall performance score submitted is a weighted average of: (Performance rate 1 x 70%)+(Performance rate 2 x 30%)</p>
<p>Denominator Statement</p>	<p>All final pathology reports for eligible carcinoma of the endometrium cases that require the use of a CAP cancer protocol (includes carcinomas, carcinosarcomas (malignant mixed Müllerian tumor) and neuroendocrine carcinomas arising in the endometrium).</p> <p>CPT®²: 88309 (for abdominal hysterectomy with/without bilateral salpingo-oophorectomy for neoplasia)</p> <p>AND</p> <p>Any of the ICD10:</p> <ul style="list-style-type: none"> • C54.0: malignant neoplasm of isthmus uteri • C54.1: malignant neoplasm of endometrium • C54.3: malignant neoplasm of fundus uteri • C54.8: malignant neoplasm of overlapping sites of corpus uteri • C54.9: malignant neoplasm of corpus uteri, unspecified <p>Denominator Notes:</p> <ol style="list-style-type: none"> 1. The cancer protocol covers the following procedure: Hysterectomy with/without salpingoophorectomy. 2. Per the Protocol for the Examination of Specimens from Patients with Carcinoma and Carcinosarcoma of the Endometrium, this protocol should NOT be reported on the following tumor types: carcinoma arising in the uterine cervix, uterine sarcoma (including adenocarcinoma), or lymphoma.

¹ Highlights indicate changes from 2018 reporting to 2019 reporting

² CPT copyright: 2018 American Medical Association. All rights reserved.

Last Updated: 1/21/2019



Denominator Exclusions	Biopsy procedures.
Denominator Exceptions	Cases requiring intradepartmental or extra-departmental consultation.
Numerator Statement	<p>All eligible cases containing all of the required elements found in the current CAP Carcinoma of the Endometrium protocol. Optional data (marked with a “+” in the CAP cancer protocol) is not required but may be present. The current protocol, the required elements include:</p> <ul style="list-style-type: none"> • Procedure • Histologic Type • Histologic Grade • Myometrial Invasion • Uterine Serosa Involvement • Cervical Stromal Involvement • Other Tissue/Organ Involvement • Margins (required only if cervix and/or parametrium/paracervix is involved by carcinoma) <ul style="list-style-type: none"> • Ectocervical/Vaginal Cuff Margin • Parametrial/Paracervical Margin • Lymphovascular Invasion • Regional Lymph Nodes details • Pathologic Stage Classification (pTNM, AJCC 8th Edition) <p>* If an item is not applicable, an “N/A” listing is required.</p> <p>AND</p> <p>Final pathology report in the laboratory/hospital information system with result verified and reported by the laboratory, available to the requesting physician(s) within 4 business days.</p> <p>Numerator definitions:</p> <ol style="list-style-type: none"> 1. Turnaround Time (TAT): The day the specimen is accessioned in the lab to the day the final report is signed out. Business days counted only. 2. Accession Date: The date recorded in the laboratory/hospital information system that documents when a specimen was received by the laboratory. 3. Report Date: The date recorded in the laboratory/hospital information system that documents when a result is verified and reported by the laboratory and is available to the requesting physician(s) (signed out). 4. Signed Out: The pathology report with a final diagnosis is released.
Numerator Exclusions	None
Measure Information	
NQS Domain	Communication and Care Coordination



Meaningful Measures Area(s)	Transfer of Health Information and Interoperability
Meaningful Measure Rationale	<p>The CAP cancer protocols have been thoroughly researched and have been determined to contain all the elements that a clinician would need to appropriately treat a patient with a malignant disease. Therefore, utilizing all the required elements found in a CAP protocol for malignant cases should be the very definition of a high-quality report and serve as a measure of pathologist performance. An accurate and complete diagnosis as would be found in a high-quality pathology report with the CAP cancer template is crucial to successful patient treatment and outcomes. The cancer protocols standardize the collection and reporting of all cancer patient data, facilitates communication between pathologists, clinicians and cancer registrars, and improves and supports information exchange and data interoperability (1).</p> <p>Turnaround time (TAT) is an indicator of efficiency in anatomic pathology and may affect coordination of patient care. Timely pathology reports are one of the most important tools physicians use to adequately manage the quality and safety of patient care. The implication of surgical pathology report delay, as shown in research evidence, is that prolonged turnaround time plays a major role in disease complications, including raising morbidity and mortality rates. Therefore, verifying pathology reports in an appropriate timeframe helps healthcare practitioners with timely diagnosis and more effective treatment planning (2-4).</p> <ol style="list-style-type: none"> 1. Krishnamurti, U, et. Al. CAP cancer protocols and pathology reports. Endometrium 4.1.0.0 (August 2018). https://documents.cap.org/protocols/cp-femalereproductive-endometrium-18protocol-4100.pdf 2. Alshieban S. and Al-Surimi K. Reducing turnaround time of surgical pathology reports in pathology and laboratory medicine departments. BMJ Qual Improv Rep. 2015 Nov 24;4(1). pii: u209223.w3773. doi: 10.1136/bmjquality.u209223.w3773. eCollection 2015. 3. Volmar, KE et al. Turnaround Time for Large or Complex Specimens in Surgical Pathology: A College of American Pathologists Q-Probes Study of 56 Institutions. Archives of pathology & laboratory medicine. 139. 171-7. 10.5858/arpa.2013-0671-CP. 2015. 4. Patel, S. et al. Factors that impact turnaround time of surgical pathology specimens in an academic institution. Hum Pathol. 2012 Sep;43(9):1501-5. doi: 10.1016/j.humpath.2011.11.010. Epub 2012 Mar 8.
Measure Type	Process
Data Source	Laboratory Information System; CAP cancer protocols; and pathology reports
Summary of Performance	A CAP Q-Probes study demonstrated that about 30% of cancer reports do not have all the scientifically validated elements required by the ACS CoC. The CAP cancer protocols have been thoroughly researched and have been

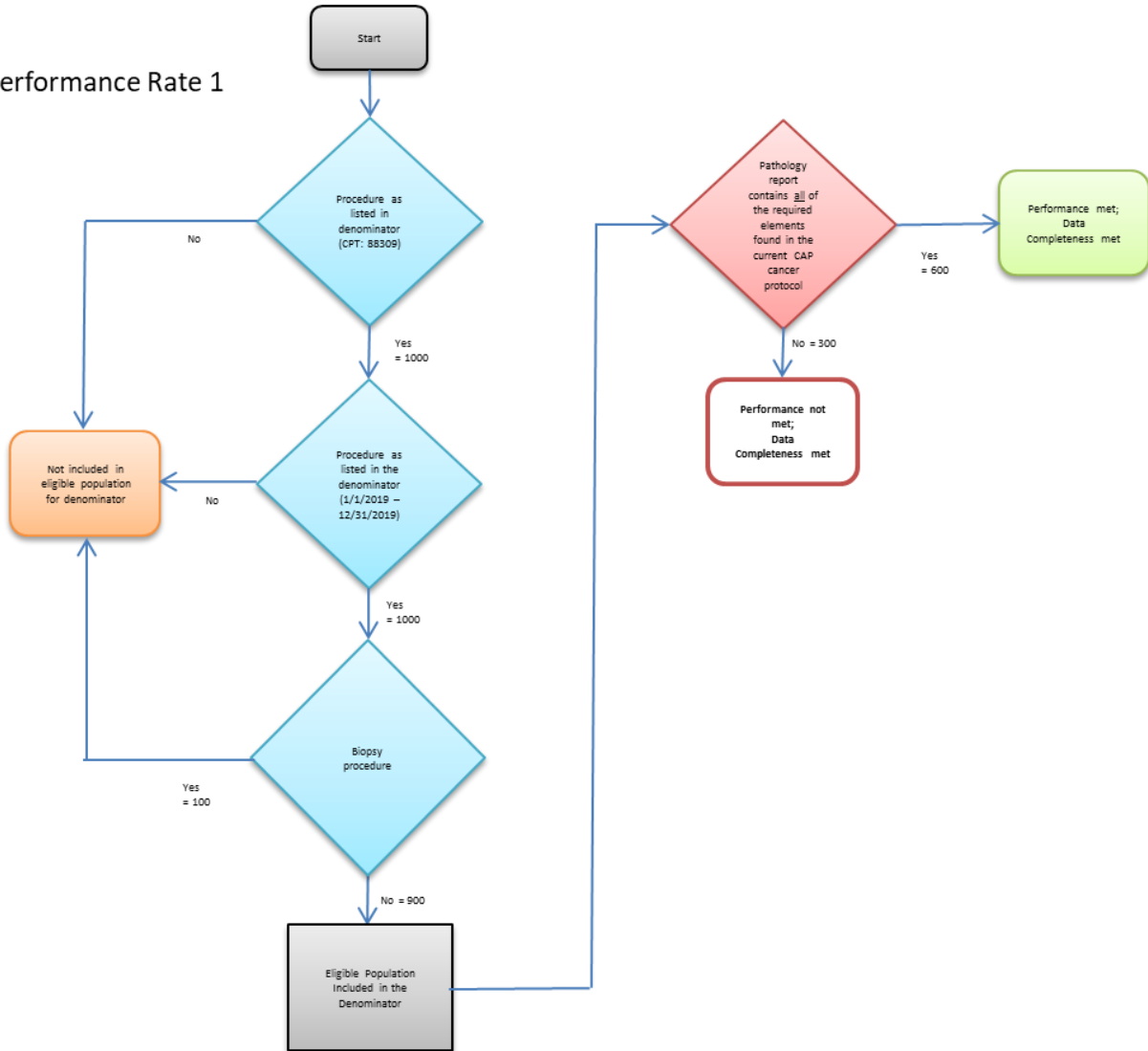


Gap Evidence	determined to contain all the elements that a clinician would need to appropriately treat a patient with a malignant disease. Therefore, utilizing all the required elements found in a CAP protocol for malignant cases should be the very definition of a high-quality report and serve as a measure of pathologist performance. 1. Michael O. Idowu, MD; Leonas G. Bekeris, MD; Stephen Raab, MD; Stephen G. Ruby, MD, MBA; Raouf E. Nakhleh, MD. Adequacy of Surgical Pathology Reporting of Cancer A College of American Pathologists Q-Probes Study of 86 Institutions Arch Pathol Lab Med. 2010;134:969–974.
Measure Owner	College of American Pathologists
NQF ID	N/A
Number of Performance Rates	1
Overall Performance Rate	1 st Performance Rate
High-priority	Yes
Improvement Notation	Inverse Measure: No Proportional Measure: Yes (Higher score indicates better quality) Continuous Variable Measure: No Ratio Measure: No Risk-adjusted: No
Specialty	Pathology
Current Clinical Guideline the Measure is Derived From	Guideline: None. Cancer Protocol: Krishnamurti, U, et. Al. CAP cancer protocols and pathology reports. Endometrium 4.1.0.0 (August 2018). https://documents.cap.org/protocols/cp-femalereproductive-endometrium-18protocol-4100.pdf



Measure Flow

Performance Rate 1



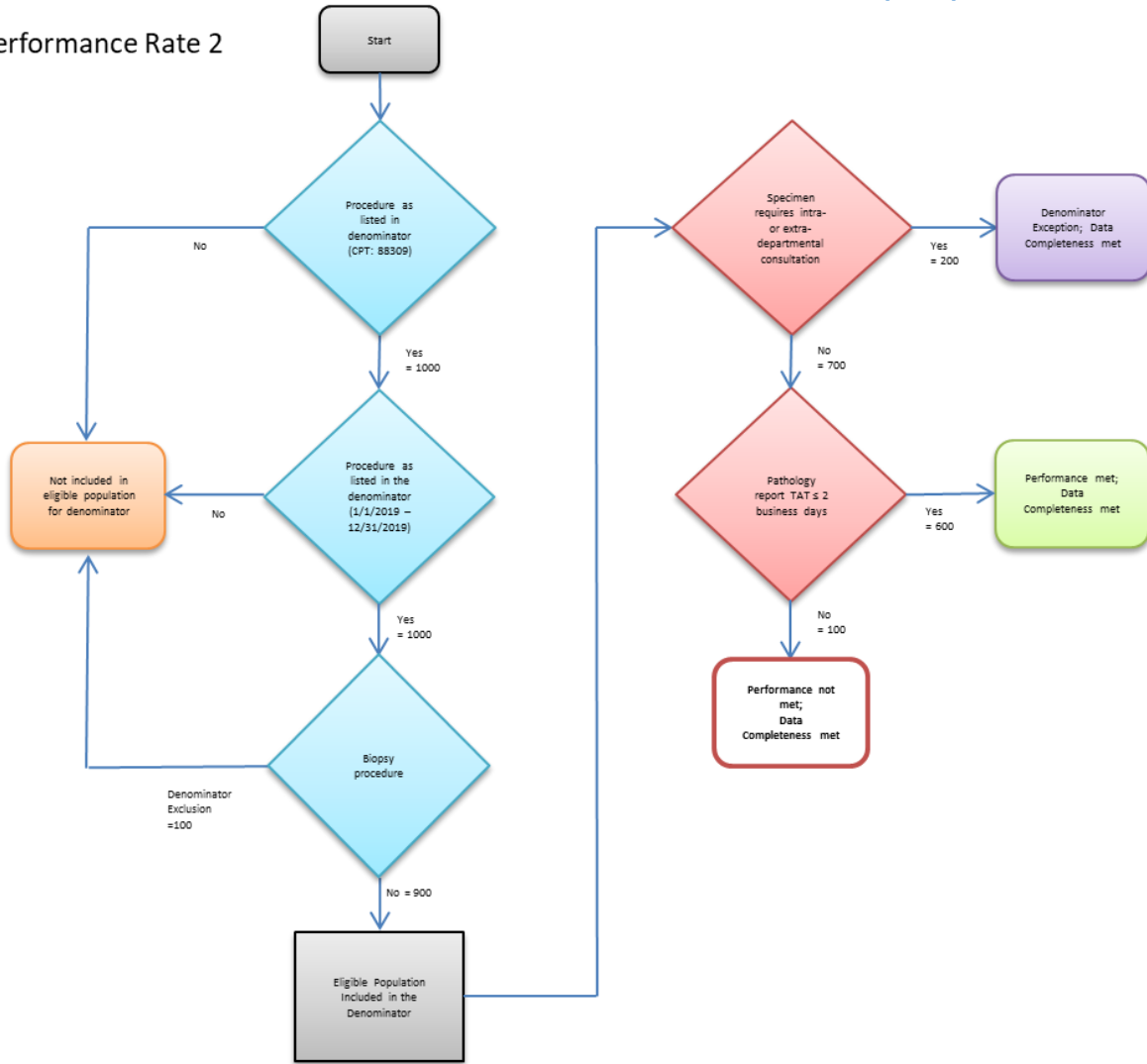
Data Completeness =			
Performance Met + Performance Not Met	=	600 + 300	
	=	900	= 100%
Eligible Population			
Performance Rate =			
Performance Met	=	600	
Eligible Population	=	900	= 67%

CPT only copyright 2018 American Medical Association. All rights reserved. The measure diagrams were developed as a supplement resource to be used in conjunction with the measure specifications. They should not be used alone or as a substitution for the measure specification. See the posted measure specifications for the specific coding and instructions to submit this measure.

Weighted Score: Performance Rate 1 x 70% = (0.67 x 0.70) = 47%



Performance Rate 2



Data Completeness =	Performance Met + Denominator Exceptions + Performance Not Met	$\frac{200 + 600 + 100}{900} = 100\%$
Eligible Population		900
Performance Rate =	Performance Met	$\frac{600}{800} = 75\%$
Data Completeness Numerator + Denominator Exceptions		800

CPT only copyright 2018 American Medical Association. All rights reserved. The measure diagrams were developed as a supplement resource to be used in conjunction with the measure specifications. They should not be used alone or as a substitution for the measure specification. See the posted measure specifications for the specific coding and instructions to submit this measure.

Weighted Score: Performance Rate 2 x 30% = (0.75 x 0.30) = 23%
 Overall Performance Score = (Performance Rate 1 x 70%) + (Performance Rate 2 x 30%)
 = 47 + 26 = 73% (Score submitted to CMS)