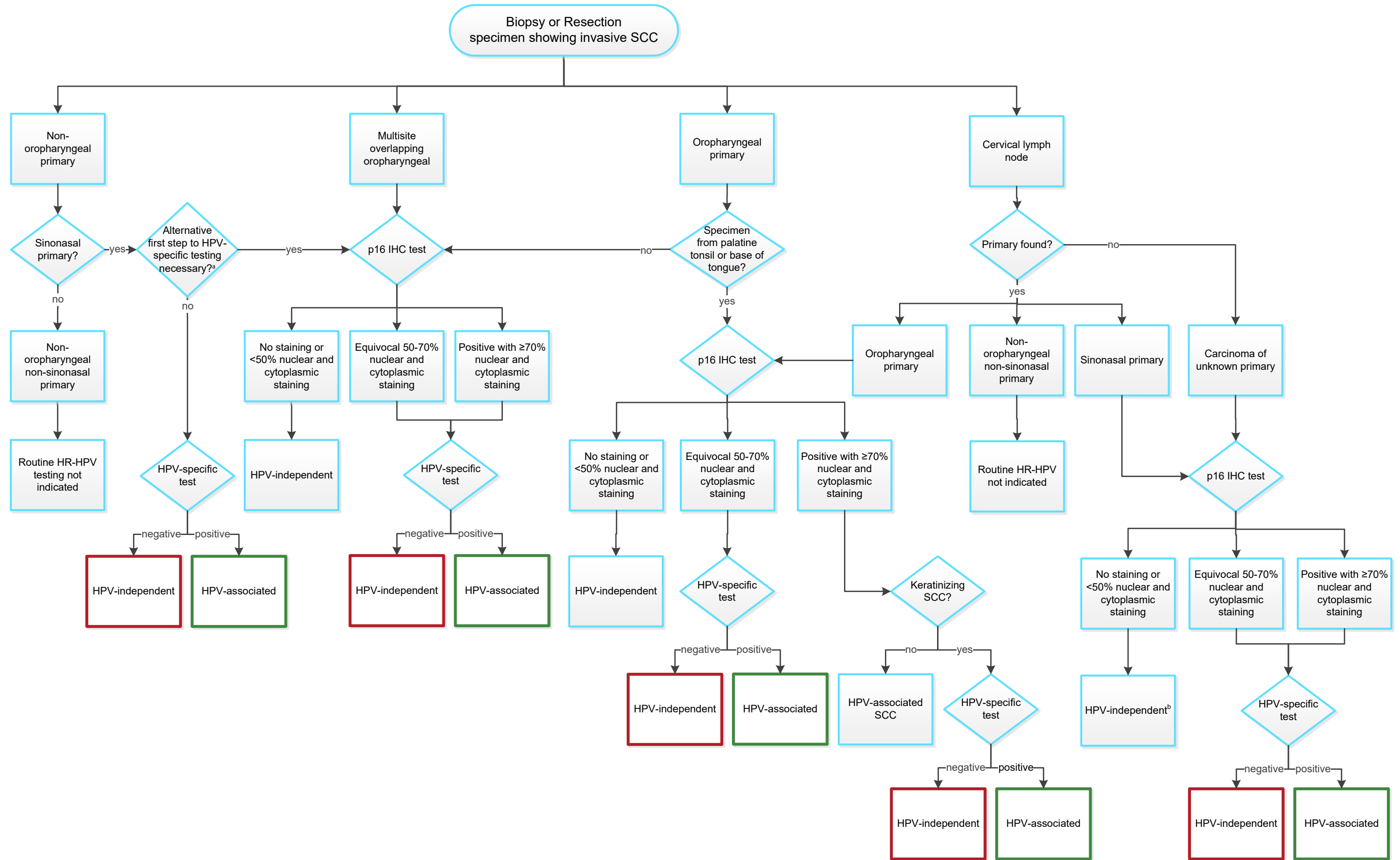


# High-Risk Human Papillomavirus Testing in Head and Neck Squamous Cell Carcinomas Algorithm



<sup>a</sup>Although HPV-specific testing is recommended as the first line testing; p16 IHC is an alternative first step, if followed by HPV-specific testing for p16 positive patients.

<sup>b</sup>Consider Epstein-Barr virus (EBV) testing if tumor is non-keratinizing or lymphoepithelial morphology.

Abbreviations: HR-HPV, high-risk human papillomavirus; IHC, immunohistochemistry; SCC, squamous cell carcinoma